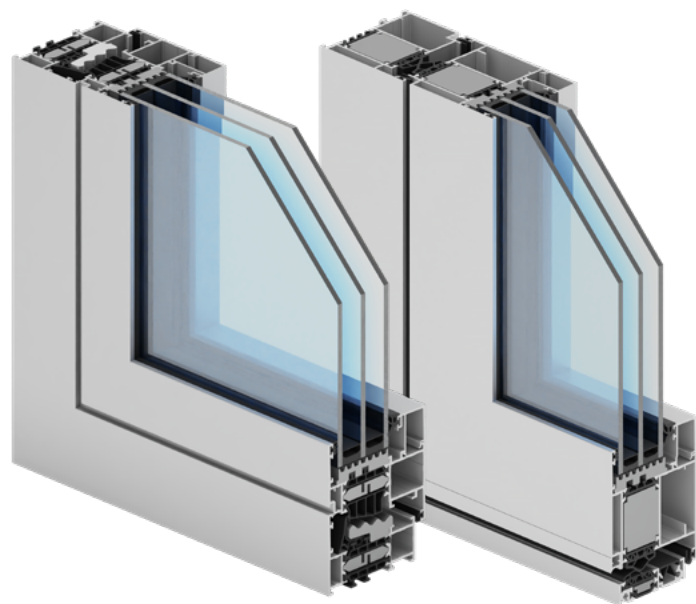


GENESIS 75

aliplast
aluminium systems



window and door system



Genesis 75

- _ three-chamber window system used to construct windows with increased thermal insulation performance
- _ thermal parameters of the Genesis 75 window meet the requirements applicable as of 2021 (Uw starting from 0.90)
- _ the Genesis 75 window system is based on frame sections with a depth of 75 mm
- _ wide range of sections/profiles offered as part of the Genesis 75 system, enabling the design of modern windows that feature high functionality
- _ the Genesis 75 system uses modern insulating materials that are a market novelty; in addition to the classic window central gasket, an additional thermal gasket has been designed to achieve very high window tightness (air infiltration, watertightness)
- _ possible selection of different profile finishes (also renovation profiles)
- _ the system makes it possible to construct all-glass 90° corner connection
- _ the Genesis 75 window system sets a new standard for window insulation, while maintaining the highest ergonomics of use and modern profile aesthetics
- _ available system options:
 - Genesis OUT – outswing window
 - Genesis SU – concealed sash option
- _ Genesis 75 is a system intended to design window structures in public buildings as well as in single or multi-family buildings
- _ possible to install the Flyscreen and Insect System (mosquito net systems)
- _ wide range of colours – RAL palette (Qualicoat 1518), textured colours, Aliplast Wood Colour Effect – wood-like colours, Aliplast Loft View – colours imitating stone surfaces (Qualideco PL-0001), anodised colour (Qualanod 1808), bi-colour

technical specification

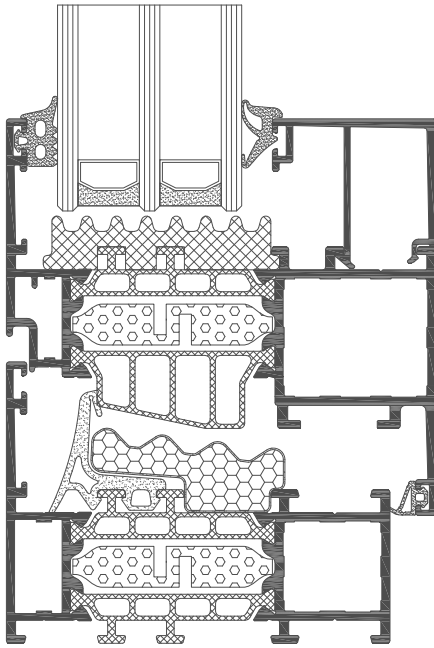
system	material	depth of frame	depth of sash	glazing range	type of windows	type of doors	acoustic
GN 75 window	aluminium/ thermal insulation	75 mm	84 mm	fix 1 - 56 mm / 9-65 mm	fix, turn-only, tilt and turn	-	45 (-1,-3) dB
GN 75 door	aluminium/ thermal insulation	75 mm	75 mm	1 - 59 mm	-	single and double doors, outside and inside opening, panic doors	44 (-1,-4) dB

performance

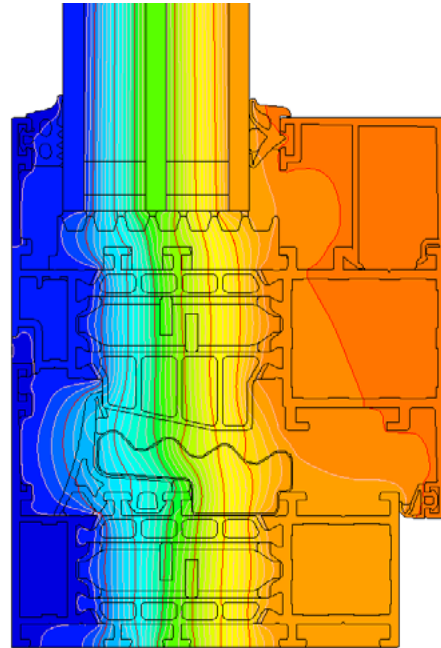
system	thermal insulation Uf*	air permeability	windload resistance	watertightness
GN 75 window	Uf from 1,35 W/m²K	Class 4; EN 12207	Class E2400 (2400 Pa); EN 12210	Class E1800 (1800Pa)/E1950*(E1950 Pa); EN 12208
GN 75 i+ window	Uf from 0,76 W/m²K	Class 4; EN 12207	Class E2400 (2400 Pa); EN 12210	Class E1800 (1800Pa)/E1950*(E1950 Pa); EN 12208
GN 75 door	Uf from 1,625 W/m²K	Class 4; EN 12207	Class C5 (2000Pa); EN 12210	Class E1200 (1200Pa); EN 12208
GN 75 i+ door	Uf from 1,195 W/m²K	Class 4; EN 12207	Class C5 (2000Pa); EN 12210	Class E1200 (1200Pa); EN 12208

* Thermal insulation is dependent on a combination of profiles and thickness of the filling

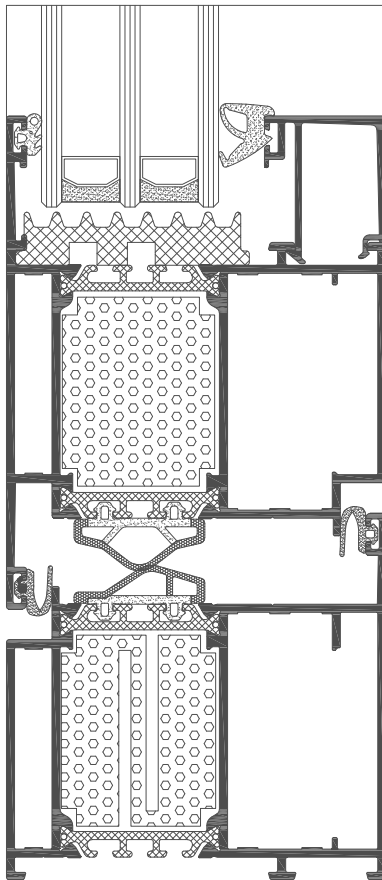
* The value of 1950 Pa was obtained during the test



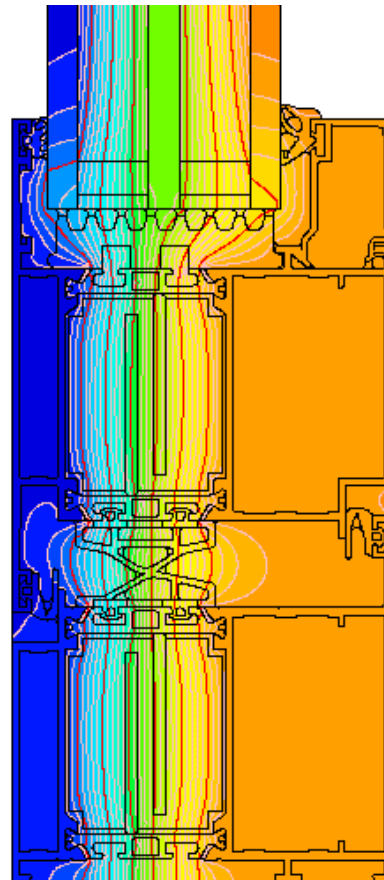
GN 75 window section (GN010 + GN020)



example distribution of isotherms for the combination of a frame with a GN 75 system window sash (GN010 + GN020)



GN75 door section (GN414 + GN425)



example distribution of isotherms for the combination of a frame with a GN 75 system door sash (GN414 + GN425)



aliplast
aluminium systems

Aliplast Sp. z o.o.
Wacława Moritza 3
20-276 Lublin

Contact

tel: +48 81 745 50 30
fax: +48 81 745 50 31
e-mail: biuro@aliplast.pl

Information

NIP: 946-23-54-607
KRS: 0000119312
www.aliplastpoland.com

